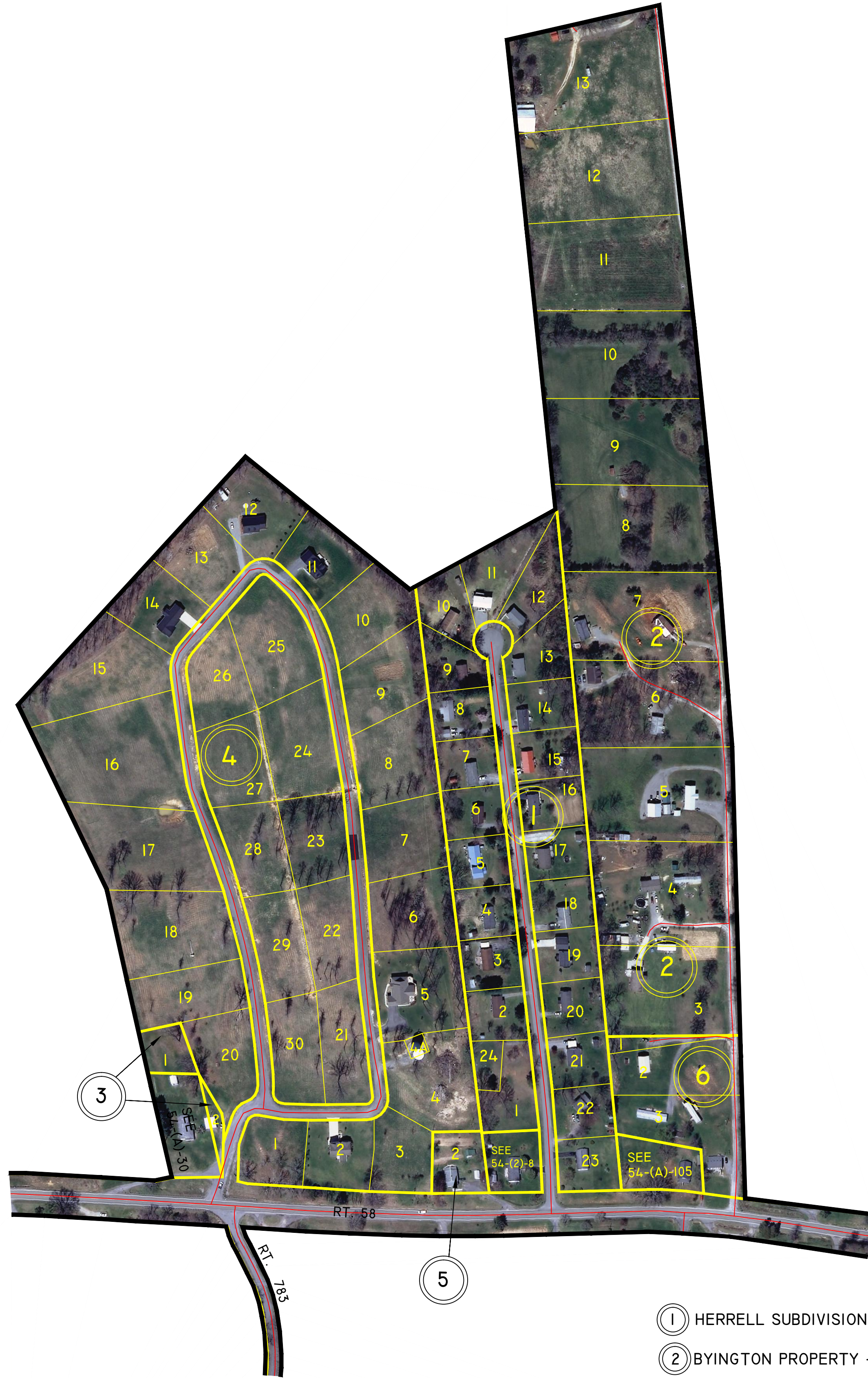
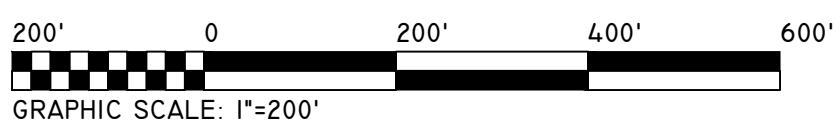


# LEE COUNTY, VIRGINIA



- ① HERRELL SUBDIVISION - P.B. B, SLIDE 003
- ② BYINGTON PROPERTY - P.B. A, SLIDE 153
- ③ F. LEE McCONNELL PROPERTY - P.B. C, SLIDE 118
- ④ VENTURE LAND DEVELOPMENT, LLC - P.B. D, SLIDE 070
- ⑤ DANA HOBBS PROPERTY - INSTRUMENT No. 0406808
- ⑥ THOMAS PROPERTY - D.B. 512, PAGE 056

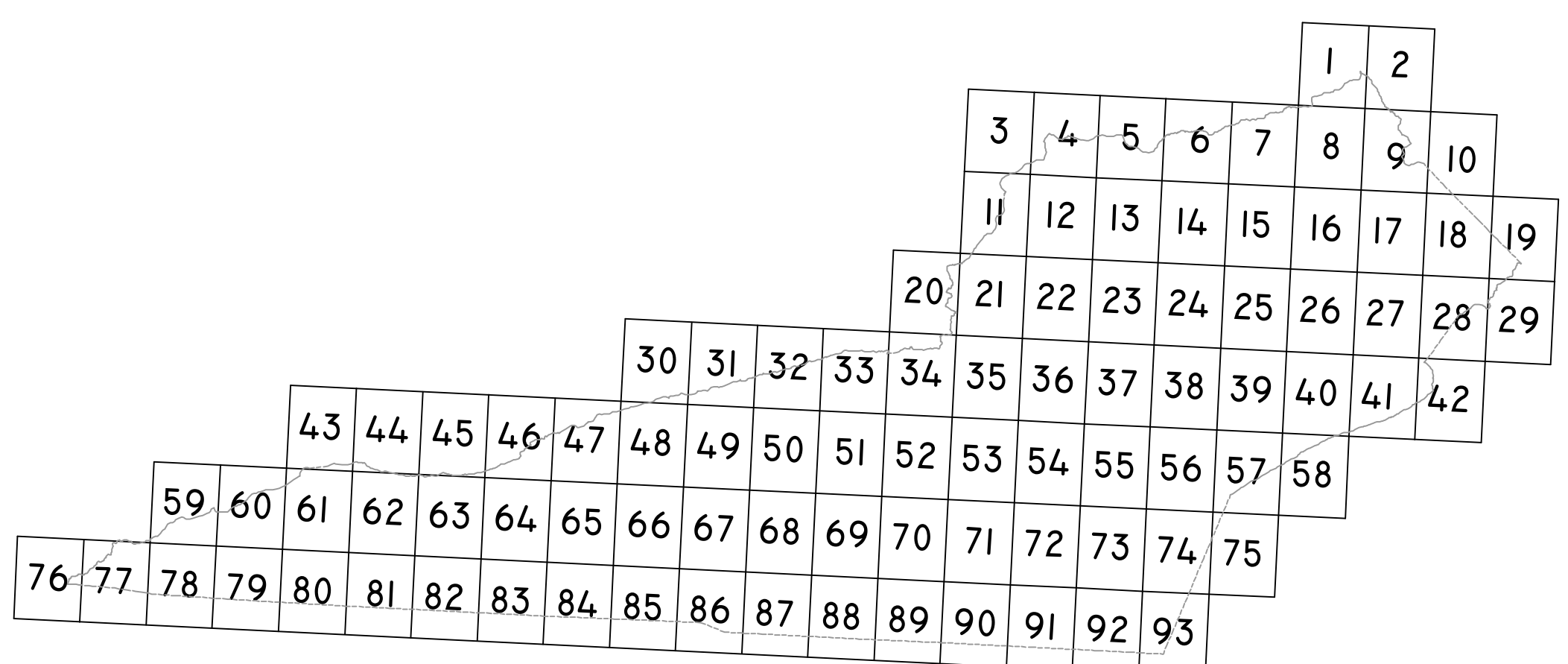


JONESVILLE  
MAGISTERIAL  
DISTRICT

SECTION 54  
INSERT G

**DISCLAIMER:**

THE INFORMATION SHOWN HEREON IS NOT BASED ON A CURRENT FIELD SURVEY. IT WAS COMPILED FROM PRIOR COUNTY TAX MAPS, SUBDIVISION PLATS, PARTITION PLATS, AERIAL PHOTOGRAPHY AND OTHER SOURCES. PLEASE NOTIFY THE LEE COUNTY COMMISSIONER OF THE REVENUE OFFICE IF ANY ERRORS OR OMISSIONS OCCUR. LEE COUNTY WILL NOT BE LIABLE FOR ANY DAMAGES, THAT MAY ARISE FROM THE USE OF THIS MAP. PROPERTY LINES AS SHOWN ARE SUBJECT TO A CURRENT FIELD SURVEY BY A CERTIFIED VIRGINIA LAND SURVEYOR. AERIAL IMAGERY ©2011 COMMONWEALTH OF VIRGINIA.



VICINITY MAP: 1" = 5 MILES

